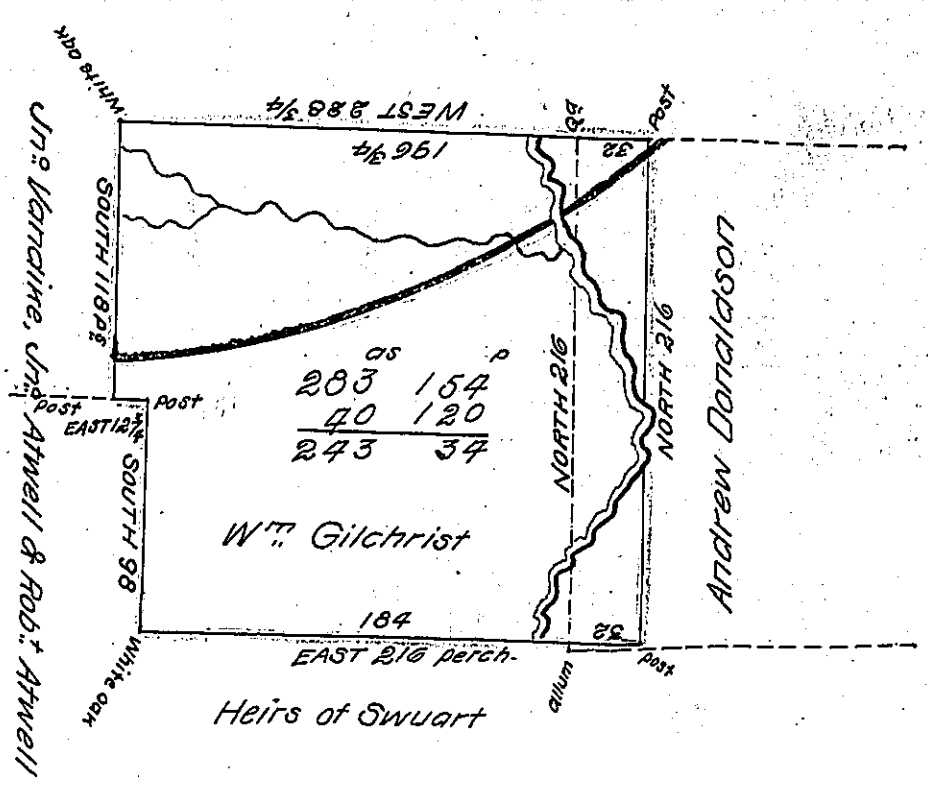


C. 94. 88



Draft of a survey (being part of a larger tract of land.) Situate in Mercer township Butler County on the water of Slipry rock containing two hundred eighty three acres one hundred fifty four perches & all & c. Surveyed the 29th of April 1829 in pursuance of a warrant in the name of William Gilchrist for two hundred eighty five acres bearing date the 11th Day of October 1823.

The part situate East of the dotted line containing forty acres one hundred and twenty perches claimed by James Buchanan who it appears has a patent for the same

To Sam^l Cochran Esq^r
Surveyor Gen^l

W^m Purviance D. S.

IN TESTIMONY that the above is a copy of the original remaining on file in the Department of Internal Affairs of Pennsylvania, made conformably to an Act of Assembly approved the 16th day of February, 1833, I have hereunto set my Hand and caused the Seal of said Department to be affixed at Harrisburg, this third day of January 1905

Loae A. Purviance
Secretary of Internal Affairs.